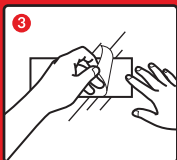
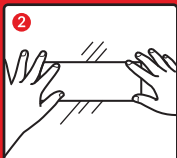
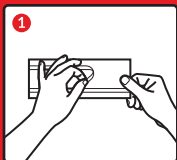




BUGBANE

TRANSPARENT WINDOW FLY TRAP



DIRECTIONS FOR USE

- 1. PEEL OFF 2 THIN LINERS ON THE BACK**
- 2. PLACE TRAP FIRMLY ON A WINDOW OR FLAT SURFACE, MAKE SURE GLASS IS DRY AND DUST FREE BEFORE APPLYING TRAP**
- 3. PEEL OFF LARGE RELEASE LINER TO EXPOSE THE AREA THAT WILL TRAP FLIES**

FOR BETTER RESULTS, YOU CAN ADD HONEY OR SYRUP. IF THE RESIDUE NEEDS TO BE CLEANED, IT IS EASIER TO USE PAINT THINNER.

CAUTION:

KEEP OUT OF REACH OF CHILDREN AND PETS. IN CASE OF CONTACT WITH ADHESIVE, USE VEGETABLE OR MINERAL OIL TO REMOVE FROM SKIN.

DISPOSAL:

WHEN THE WINDOW FLY TRAP IS FULL OF INSECTS, TAKE IT OUT AND WRAP IT IN NEWSPAPER, THEN THROW IT AWAY IN TRASH.